



3/350 - 352 Beechworth Road Wodonga VIC

2 1 2

This rock solid double storey two bedroom unit features a large double garage, a rarity in the market.

- Some of the quality appointments include-
- Welcoming and spacious light filled lounge
- Large all electric kitchen with dishwasher provision
- Main bedroom with inviting outdoor balcony
- Comforts of two split systems plus in floor heating
- Private outdoor paved entertaining area
- For investors an expected rental return of \$355 - \$390 per week
- Total of four neat units on the allotment
- Sought after location close to shops, transport and more

Outgoings per annum council rates \$1,514, water \$488,

Type : Unit
Price : \$ 350,000
View : <https://www.wodongarealestate.com.au/sale/vic/north-eastern/wodonga/residential/unit/8109639>

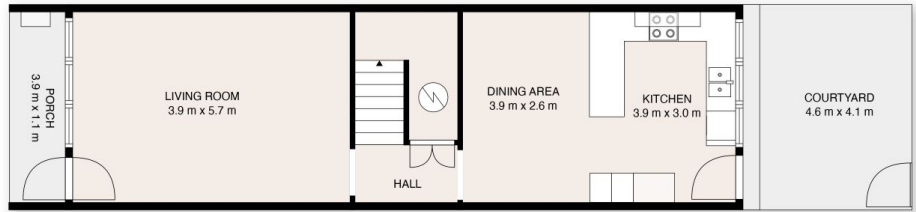


Clinton Harvey
0260 561 888

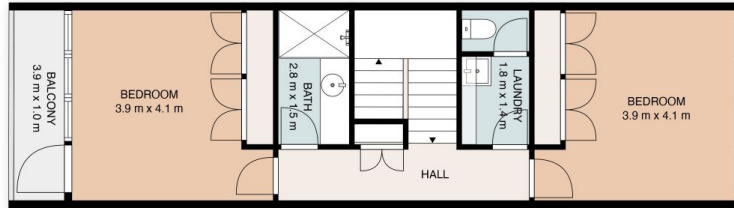


Sam Rosevear
0260 561 888

[For full version visit the website](https://www.wodongarealestate.com.au)



GROUND FLOOR



FIRST FLOOR

This floor plan including dimensions are approximate and are for illustrative purposes only and should be used purely as a guide. No guarantee can be given to accuracy of the information contained, and interested parties should conduct their own enquires.