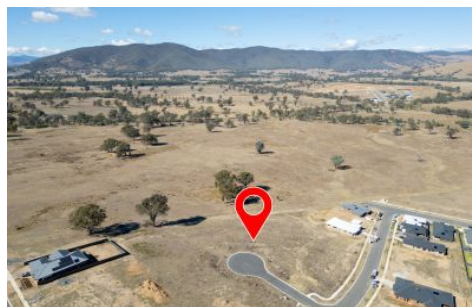




wodonga real estate
bestagents



263/6 Fairfax Close Leneva VIC

Situated in a premium court, this titled allotment of land offers the perfect canvas to create the ultimate living experience.

Spanning over 1,100m², this premium land parcel boasts breath-taking views overlooking the picturesque Leneva valley, providing a serene backdrop for your future home.

With its generous size, the possibilities are endless for designing your ideal residence, complete with ample space for outdoor entertaining, lush gardens, and room for the whole family to thrive.

Not only does this property offer a tranquil setting, but it also provides convenience at your doorstep. Close proximity to schools, shops, and brand-new family parks ensures that all your everyday needs are easily met,

Price : \$299,000
Land Size : 1167 sqm
View : <https://www.wodongarealestate.com.au/sale/vic/north-eastern/leneva/residential/land/7968612>



Clint Ilsley
0260 561 888