



**wodonga real estate**  
**bestagents**



### 13 McGeoch Court Wodonga VIC

4 2 2

Welcome to this stunning 4-bedroom home perfectly situated in a prime court location, just a stone's throw away from essential amenities. Nestled on a generous 639m<sup>2</sup> allotment, this property built in 2016 offers both convenience and comfort.

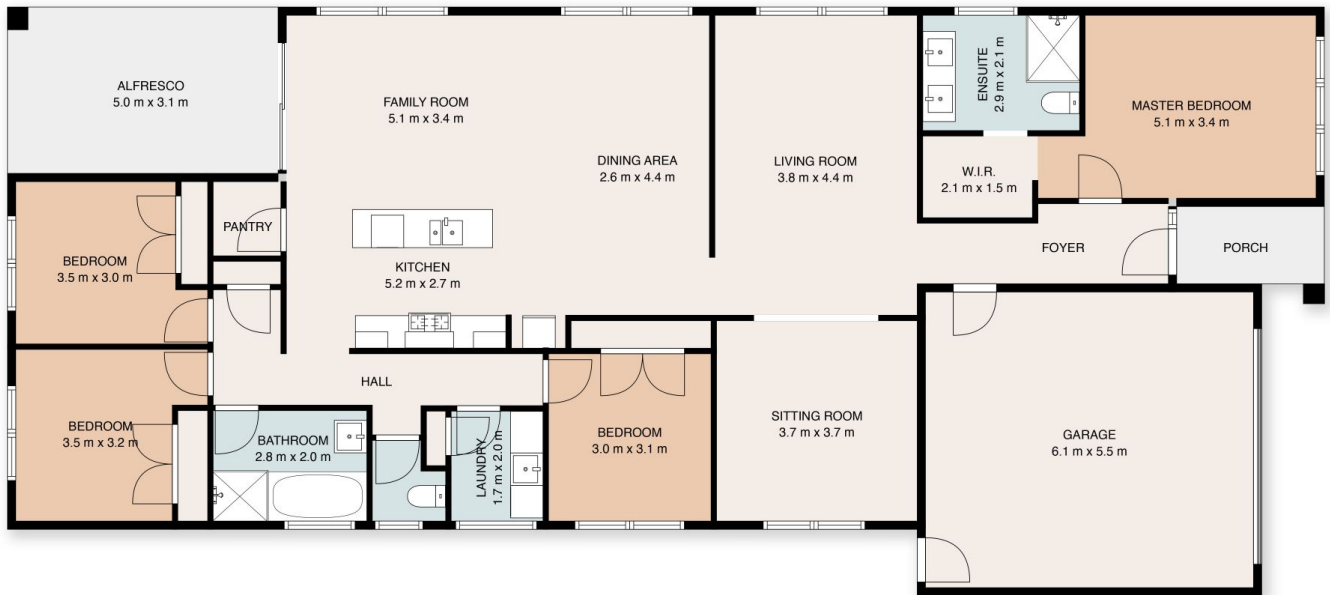
A mere 500m proximity to Wodonga Hospital and a short 800m stroll to Wodonga Senior Secondary College, it caters to both work and educational needs. Additionally, its close proximity, just 2.2km from Wodonga CBD, ensures easy access to shopping, dining, and entertainment options. Nature enthusiasts will appreciate the nearby Willow Park nature park and Martin Park sporting fields, ideal for leisurely strolls or outdoor activities.

Step inside to discover a modern interior designed for effortless living. The open plan kitchen, dining, and family

**Price** : \$ 521,000  
**Land Size** : 639 sqm  
**View** : <https://www.wodongarealestate.com.au/sale/vic/north-eastern/wodonga/residential/house/7947911>



**Silviya Saric**  
**0260 561 888**



This floor plan including dimensions are approximate and are for illustrative purposes only and should be used purely as a guide. No guarantee can be given to accuracy of the information contained, and interested parties should conduct their own enquires.