



10 Chatham Road Leneva VIC

4 2 2

Welcome to your dream home! Situated on a generous 772m² allotment, this superior Cavalier built residence boasts contemporary elegance and modern convenience. With 3 spacious living areas, a magnificent outdoor oasis and a list of features that will leave you in awe, this property offers the perfect blend of luxury, style and functionality.

Key Features:

Master Retreat: The spacious master bedroom is a sanctuary with his and hers walk-in robes, an ensuite that includes a shower seat and double shower heads, offering a spa-like experience in the comfort of your own home.

Vaulted Ceilings: The main living areas feature vaulted ceilings, adding an extra dimension of space and grandeur to your daily life.

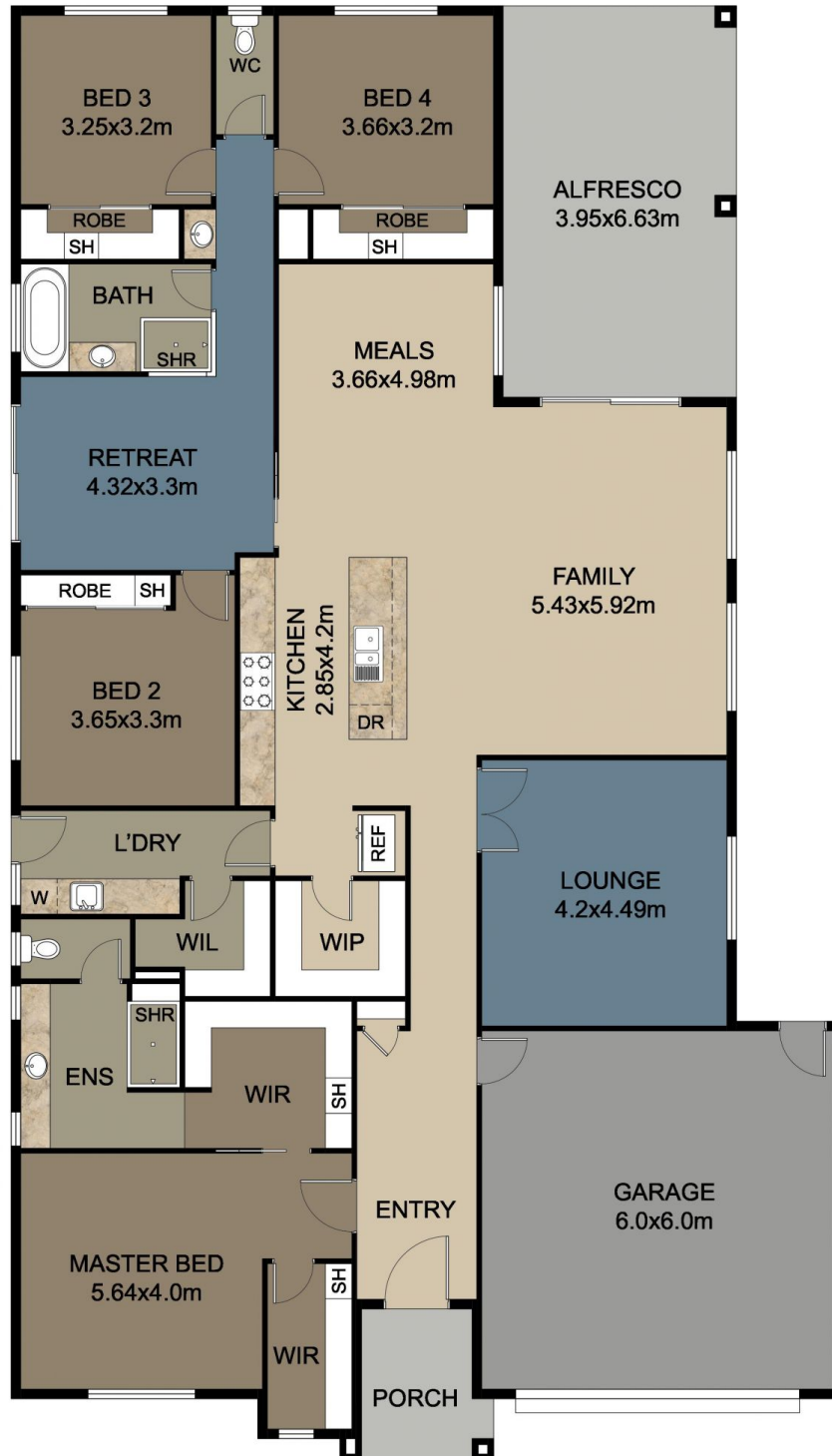
Price : \$865,000
Building Size : 312.56 sqm
Land Size : 772 sqm
View : <https://www.wodongarealestate.com.au/sale/vic/north-eastern/leneva/residential/house/7762611>



Silviya Saric
0260 561 888



Clinton Harvey
0260 561 888



FLOOR PLAN

This floor plan including furniture, fixture measurements and dimensions are approximate and for illustrative purposes only. BoxBrownie.com gives no guarantee, warranty or representation as to the accuracy and layout. All enquiries must be directed to the agent, vendor or party representing this floor plan.

10 Chatham Road, Leneva