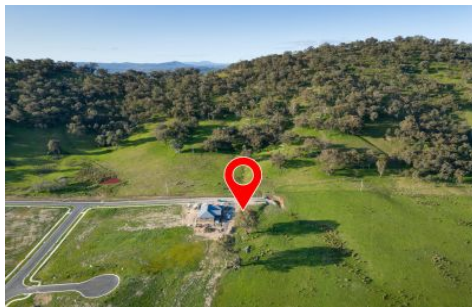




**wodonga real estate**  
**bestagents**



### **274/118 Burnham Road Leneva VIC**

? Size: An expansive 1,102m<sup>2</sup> allotment.

? Ready to Build: This pristine plot is primed for your dream residence or next lucrative investment. Soil tested and certified, it ensures a seamless building process.

? Builder Connections: Collaborate with our network of top-tier local builders or welcome your own trusted professionals.

? Strategic Location: Nestled in the heart of Wodonga, Kinchington Estate promises the tranquillity of the countryside with the city's essential amenities just moments away. Whether it's schools, retail, or recreational facilities, everything is within arm's reach.

? Limited Availability: Such blends of serenity and

**Price** : \$ 290,000  
**Land Size** : 1102 sqm  
**View** : <https://www.wodongarealestate.com.au/sale/vic/north-eastern/leneva/residential/land/7738685>



**Clint Ilsley**  
**0260 561 888**