



2 Murray Place Bellbridge VIC

4 3 2

Welcome to this beautiful double storey double brick home in the charming and highly sought-after township of Bellbridge. As you step inside, you'll immediately notice the solid and reliable construction of the home, offering a sturdy foundation for all your plans.

The ground floor of the home features a well-planned living and dining area, providing a spacious and inviting area for family gatherings or entertaining guests. The well-appointed kitchen includes functioning appliances, good storage, and ample natural light, making it a perfect place for cooking your favourite meals.

Upstairs, you'll find four well-sized bedrooms, each with its own unique charm and character. The master suite is a true standout feature, with an ensuite bathroom and a private balcony offering stunning views of Lake Hume,

Price : \$ 435,000
Land Size : 842 sqm
View : <https://www.wodongarealestate.com.au/sale/vic/north-eastern/bellbridge/residential/house/7559635>



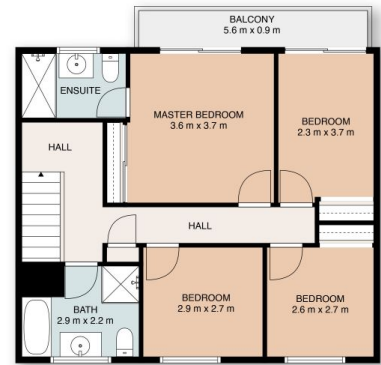
Clint Ilsley
0260 561 888



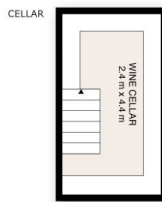
Kiley Law
0260 561 888



GROUND FLOOR



UPPER FLOOR



CELLAR

2 Murray Place Bellbridge

This floor plan including dimensions are approximate and are for illustrative purposes only and should be used purely as a guide. No guarantee can be given to accuracy of the information contained, and interested parties should conduct their own enquires.