



1/9 Highland Crescent Wodonga VIC

2 1 1

Perfectly placed this unit of only 2 on the block represents great value for the investor or owner/occupier. Showcasing a fully optioned kitchen with gas cooktop, electric oven, breakfast bar, excellent pantry storage & space for a dishwasher.

Immaculately presented & comprising 2 large bedrooms both with built-ins and main with ceiling fan, also with a comfortable living arrangement.

A peaceful crescent off the main street sets the tone adjacent to Jim Matthews park, plus local shopping strip a 2-minute car trip or a 700m leisurely walk away.

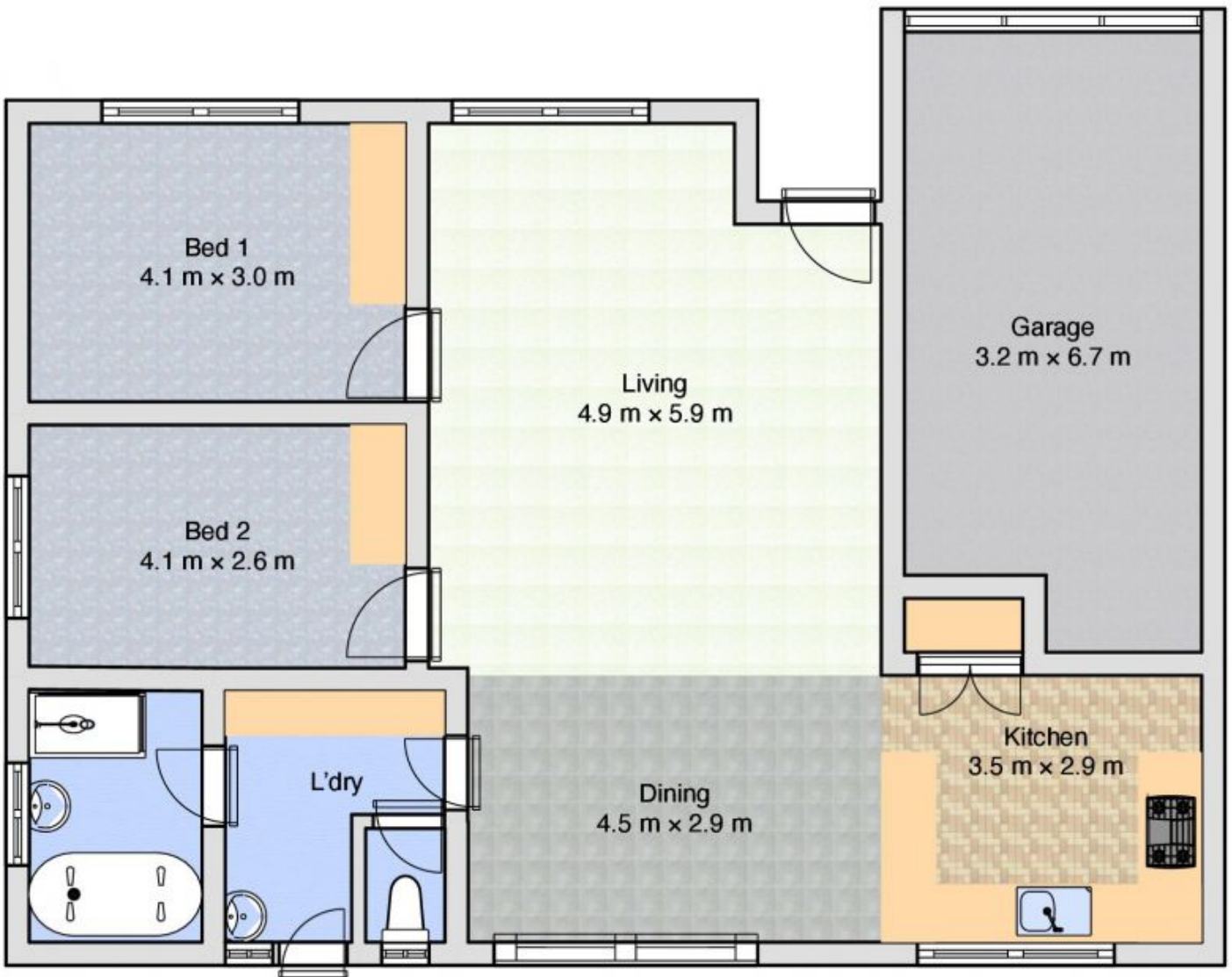
A great spot with reverse cycle split system cooling unit, a larger than normal private and securely enclosed rear yard, oversized garaging & awnings to front windows.

Price : \$ 325,000
Land Size : 286 sqm
View : <https://www.wodongarealestate.com.au/sale/vic/north-eastern/wodonga/residential/unit/7518201>



Silviya Saric
0260 561 888

1/9 Highland Cr, Wodonga



All dimensions are approximate. This plan is for marketing and planning purposes only.