



205 Stanley Road Beechworth VIC

4 🏠 2 🚿 2 🚗

This newly built steel frame family home, on five acres sits right on the edge of town, providing more than enough room for the family.

Comprising four-bedrooms and two-bathrooms, this home has been thoughtfully built with a central open plan living area which upon entry welcomes you. The kitchen creates a sense of connection to both the lounge area and formal dining areas. Featuring a gorgeous timber bench, electric oven and gas cooktop and a spacious walk-in pantry. A wood combustion heater on a brick hearth and feature mantelpiece is centred in the living area to radiate warmth throughout the home.

The home has four carpeted bedrooms, all extremely generous in size, and are complete with built-in robes; the main with spacious en-suite and walk-in robe.

The main bathroom features a deep soaking bath, walk in shower, vanity and a toilet. An added feature is an

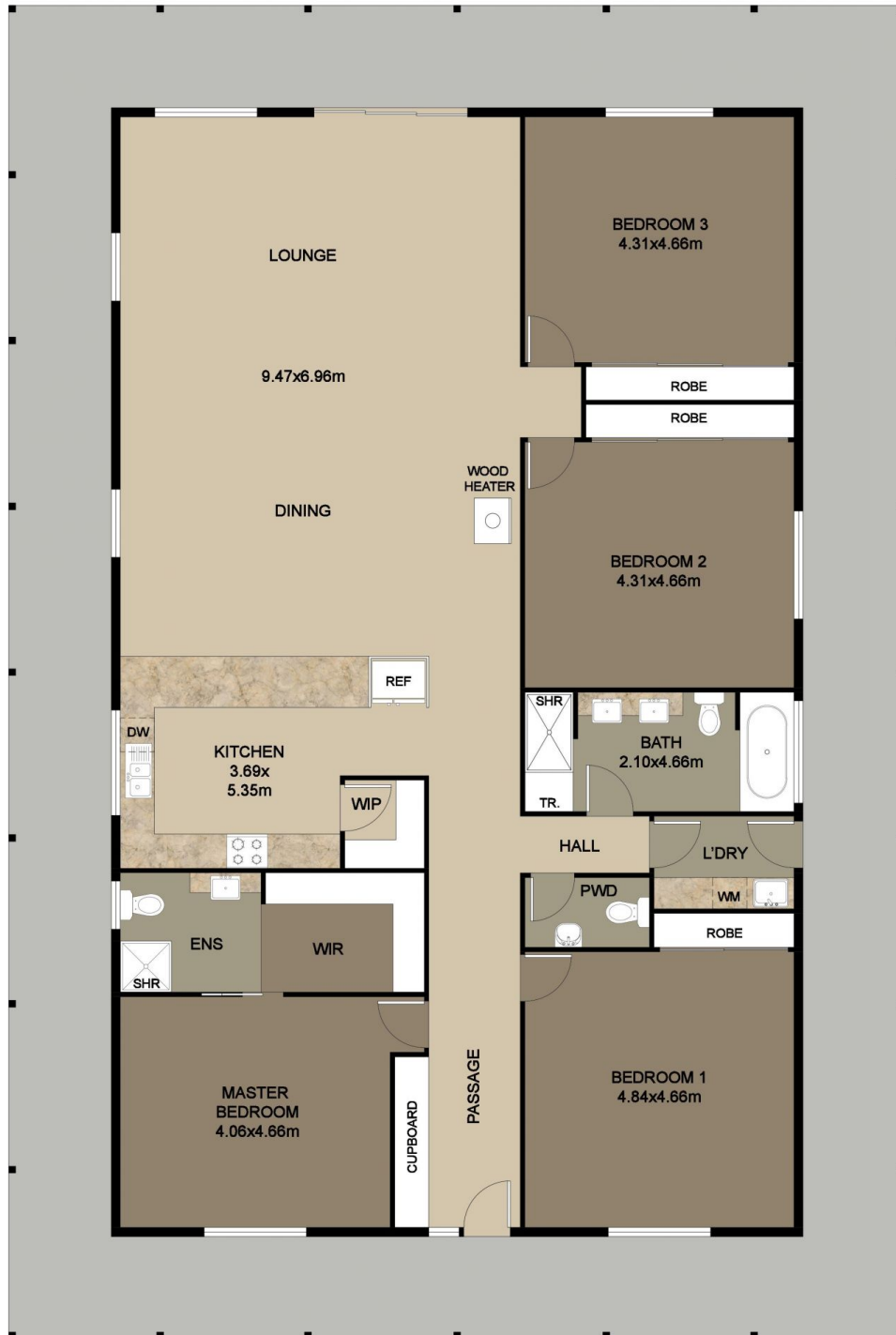
Price : \$1,050,000 - \$1,150,000

Land Size : 1.91 ha

View : <https://www.wodongarealestate.com.au/sale/vic/north-eastern/beechnorth/residential/home/7322310>



Silviya Saric
0260 561 888



FLOOR PLAN

This floor plan including furniture, fixture measurements and dimensions are approximate and for illustrative purposes only. BoxBrownie.com gives no guarantee, warranty or representation as to the accuracy and layout. All enquiries must be directed to the agent, vendor or party representing this floor plan.

205 Stanley Road, Beechworth