



**wodonga real estate**  
**bestagents**



### 35 Craig Drive Bellbridge VIC

3 2 2

Over two levels, the living options for this solid brick home are endless.

Downstairs offers an open living area which could also serve as a bedroom with adjoining kitchenette, ensuite with shower, vanity and toilet.

Internal entry from the lock-up garage is also from this level and straight onto the stairs which lead to the first floor living area.

Upstairs there are two bedrooms, the main with walk in wardrobe leading into the 2 way bathroom.

The kitchen is modern with a stainless steel 900mm electric cooktop and oven, range hood and pantry, and lots of bench space for meals preparation.

The open plan living area takes in all the natural light and looks out onto the views of Lake Hume via glass sliding doors leading onto the sun drenched balcony.

Imagine sitting enjoying the breathtaking views over Lake

**Price** : \$ 510,000

**Land Size** : 656 sqm

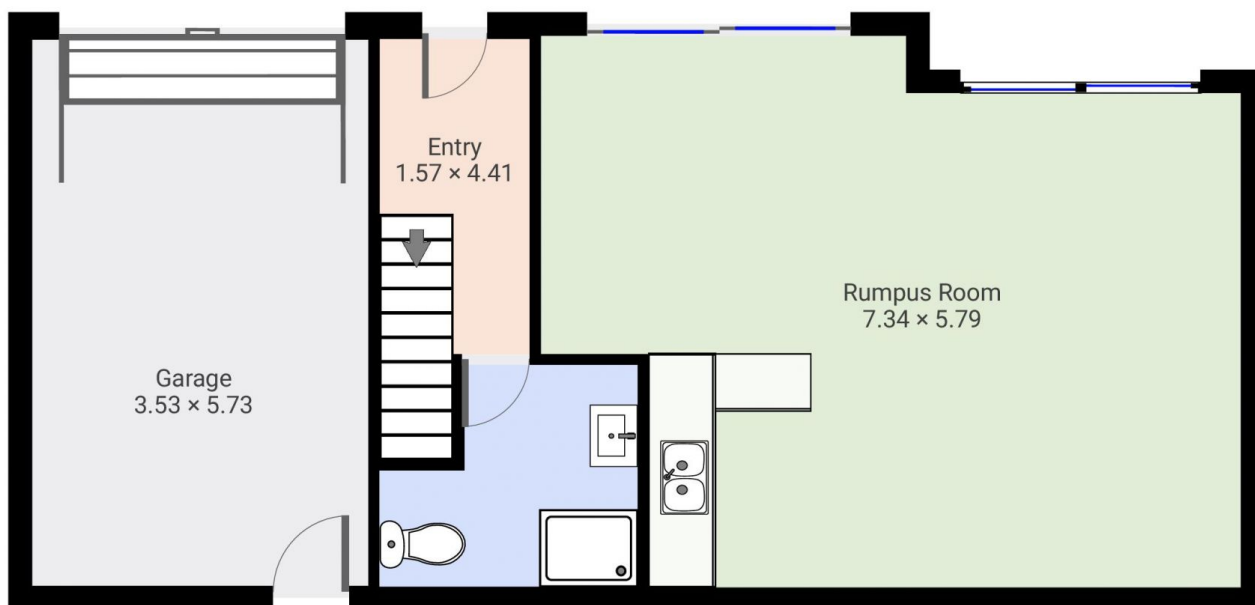
**View** : <https://www.wodongarealestate.com.au/sale/vic/north-eastern/bellbridge/residential/house/6943341>



**Silviya Saric**  
**0260 561 888**



1st floor



Ground floor

THIS FLOORPLAN IS PROVIDED WITHOUT WARRANTY OF ANY KIND. SENSOPIA DISCLAIMS ANY WARRANTY INCLUDING, WITHOUT LIMITATION, SATISFACTORY QUALITY OR ACCURACY OF DIMENSIONS.