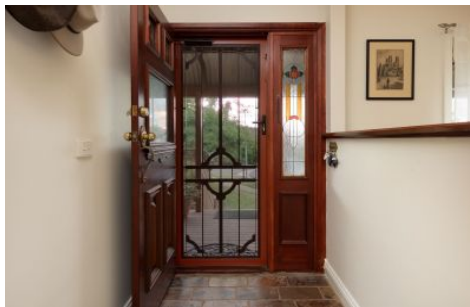




wodonga real estate
bestagents



6 Kerferd Court Wodonga VIC

4 2 1

Nestled in amongst native cottage gardens and trees in a respected court presents a family home worth witnessing.

This charming home is full of character and offers four well-proportioned bedrooms, two bathrooms and a study with built in robes. All complemented by autumnal tones throughout and a brilliant floorplan that offers perfect zoning for family cohesion or presenting a true guest experience.

A cleverly positioned kitchen is the heart of the home and is well thought out for family conversation and connectivity. The inner chef will be pleased to see a 900mm Falcon oven with matching rangehood that compliments the homes classic appeal. You can also keep an eye on the entertainment over the backyard and deck from the kitchen sink.

Price : \$ 610,000
Land Size : 763 sqm
View : <https://www.wodongarealestate.com.au/sale/vic/north-eastern/wodonga/residential/house/6785034>



Clint Ilsley
0260 561 888

6 Kerferd Court, Wodonga



wodonga real estate
bestagents



This floor plan including dimensions are approximate and are for illustrative purposes only and should be used purely as a guide. No guarantee can be given to accuracy of the information contained, and interested parties should conduct their own enquires.