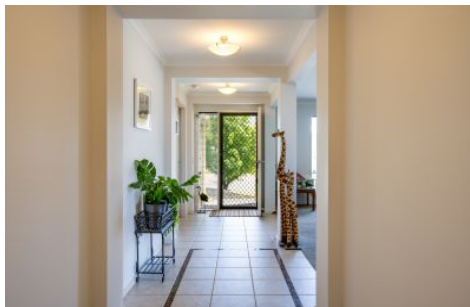




**wodonga real estate**  
**bestagents**



### 6 Fisher Drive Tallangatta VIC

4 2 2

Situated in a no through road with views to Lake Hume from the front yard is this quality Dennis Family Home on a 946m<sup>2</sup> approx. allotment.

With so many features this property is a definite must see. Tallangatta is a pristine township only 30 minutes to Wodonga by car, with great facilities including a golf course, walking tracks, sporting grounds, local hospital, and a terrific main shopping strip.

Designed for indoor- outdoor living with a wide entrance, it has north facing living areas maximising the aspect of natural daylight.

Four bedrooms - three with built-in robes. Master with walk in robe and en-suite.

Kitchen with top-quality Stainless-Steel Bosch dishwasher, island bench with lots of cupboards, electric cooking, pantry with adjacent dining looking out to the established garden and back yard.

**Price** : \$ 585,000

**Land Size** : 946 sqm

**View** : <https://www.wodongarealestate.com.au/sale/vic/north-eastern/tallangatta/residential/house/6718291>



**Silviya Saric**  
**0260 561 888**



## FLOOR PLAN

This floor plan including furniture, fixture measurements and dimensions are approximate and for illustrative purposes only. BoxBrownie.com gives no guarantee, warranty or representation as to the accuracy and layout. All enquiries must be directed to the agent, vendor or party representing this floor plan.

HOUSE AREA:	206.89m <sup>2</sup>
GARAGE AREA:	37.61m <sup>2</sup>
TOTAL AREA:	244.50m <sup>2</sup>

6 Fisher Drive, Tallangatta