



1657 Kiewa Valley Highway Kiewa VIC

4 2 4

If you are looking for something with unique and individual style for your new family home, then this is for you.

Beautiful established low maintenance grounds set on approximately 1.97ha.

Set right back from the road with a lovely outlook on offer, a tranquil, inviting, and peaceful setting escaping the hustle and bustle of city life behind.

The location is perfectly positioned close to Tangambalanga, Wodonga, and Albury.

Large master suite with ensuite and walk through his and hers robes. Separate study perfect for the home office.

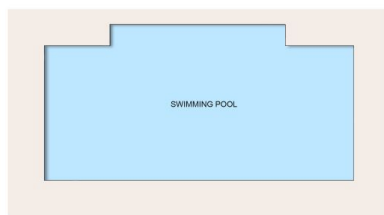
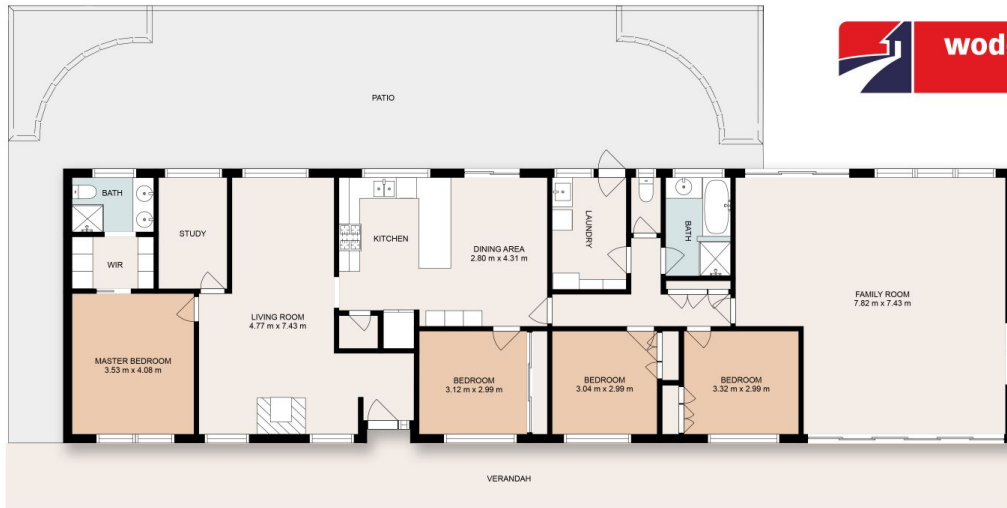
The remaining three bedrooms are large and are situated at the opposite end of the home all with built in robes.

Well-appointed renovated kitchen with ample bench space, dishwasher, 900mm cooktop/oven and walk in pantry. Two separate, spacious living zones. Formal with gas log fire, split system the other is at the opposite end of the home

Price : \$ 1,100,000

Land Size : 1.97 ha

View : <https://www.wodongarealestate.com.au/sale/vic/north-eastern/kiewa/residential/house/6673678>



1657 Kiewa Valley Highway
Kiewa

This floor plan including dimensions are approximate and are for illustrative purposes only and should be used purely as a guide. No guarantee can be given to accuracy of the information contained, and interested parties should conduct their own enquires.