



## 2 Memorial Drive Wodonga VIC

3 2 3

Rise with enthusiasm each morning and capture a glorious country outlook of the surrounding hillside, far removed from the limitations of suburbia.

When leisure time permits hook up the caravan (or other vehicles) with the designed port and truly get away from it all.

The many premium features include-

Generous size electric kitchen and extended bench space

Two living zones of a separate formal lounge and spacious family room

Comforts of gas ducted heating and evaporative cooling

Double garage with remote and internal and external separate access

Quality built by Graham James in 1999

Private and secure 1004m<sup>2</sup> allotment

Extras of 1.5KW solar, established gardens and citrus trees

Garden shedding and vegetable gardens

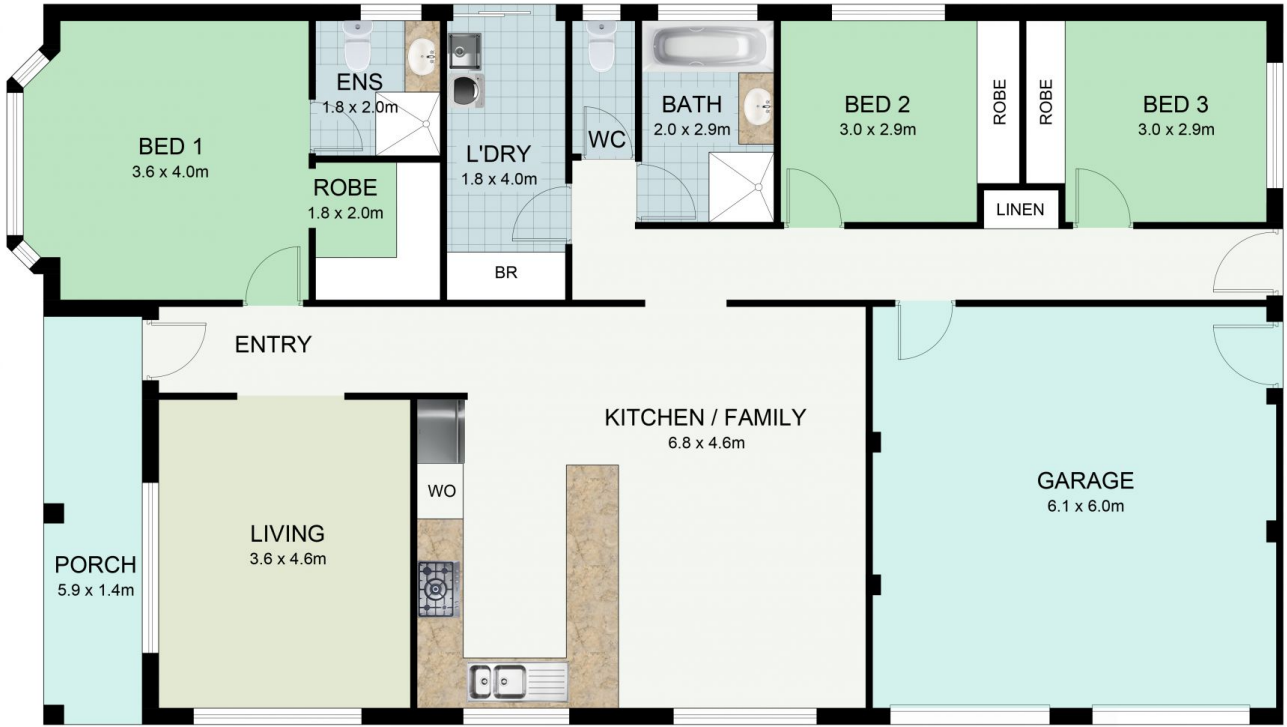
**Price** : \$ 460,000

**Land Size** : 1004 sqm

**View** : <https://www.wodongarealestate.com.au/sale/vic/north-eastern/wodonga/residential/house/6495965>



**Silviya Saric**  
**0260 561 888**



Floor plan, furniture, and fixture measurements and dimensions are approximate and are for illustrative purposes only. Boxbrownie.com gives no guarantee, warranty or representation as to the accuracy and completeness of the floor plan.

2 Memorial Drive, Wodonga