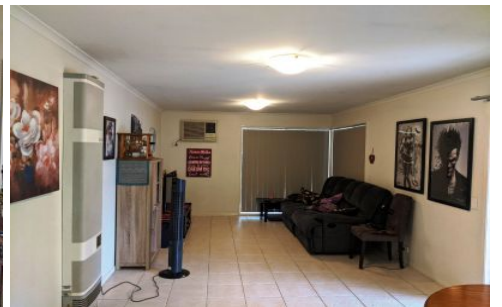
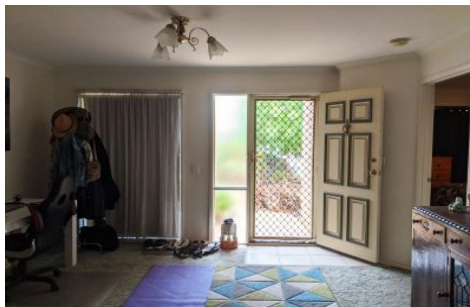




wodonga real estate
bestagents



2 Ambrose Crescent Wodonga VIC

3 1 3

Three bedroom home with built in robes, two way bathroom, small lounge plus separate tiled family/meals area, dishwasher, gas cooking and heating, undercover outdoor entertaining area, enclosed back yard, remote double lock up garage with rear roller door and additional car parking space to the side of the garage. A brand new split system air conditioner will be installed prior to new tenant moving in. Located in a quiet court location, close to Victory Lutheran College and Latrobe University.

View : <https://www.wodongarealestate.com.au/lease/vic/north-eastern/wodonga/residential/house/6314724>



Jacquie Sterk
0260 561 888