



**wodonga real estate
bestagents**



**wodonga real estate
bestagents**

ATTENTION PLEASE

As the COVID-19 virus operations continue, Wodonga Real Estate Best Agents are committed to protecting the health and safety of everyone who inspects our properties and have put a number of precautions in place.

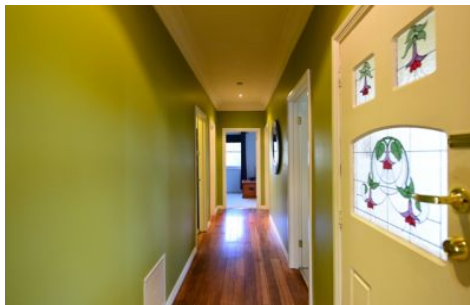
Please take note of the following:

- Number of people to enter the premises for inspection will depend on property size and state regulations.
- Our staff members will be wearing gloves, a face mask and will administer you hand sanitiser upon entry. You are, (as required by law) to wear a face mask.
- NO FACE MASK, NO ENTRY**
- Staff members will open all doors for you and turn on all lights.
- Please refrain from touching any surfaces. If there's anything you wish to look at, please ask the staff representative.

If any of the following applies to you, please refrain from making an inspection appointment:

- Have you returned from overseas or Metropolitan Melbourne in the last 14 days?
- Do you currently have any cold or flu like symptoms?
- Have you been in contact with anyone suspected of carrying the COVID-19 Virus?

We are open for business and here to help.
Please don't hesitate to contact us by phone, e-mail or via our website.



10 Dick Street Wodonga VIC

3 1 2

ONLINE APPLICATIONS WILL BE REQUIRED PRIOR TO VIEWING TIMES BEING ARRANGED

Beautifully presented home located in central Wodonga in walking distance to Wodonga's CBD. Featuring three bedrooms with built in robes and a full separate bathroom. The home has period features, formal lounge and open plan kitchen/meals and living room opening to lovely outdoor entertaining area with a built in BBQ. The period style flows through the home with polished floorboards, ducted heating and cooling and a dishwasher. Externally the property has a Double carport, powered single lock up garage, secure yard

View : <https://www.wodongarealestate.com.au/lease/vic/north-eastern/wodonga/residential/house/5914110>



Kayla Brown
0260 561 888