



**wodonga real estate  
bestagents**

**ATTENTION PLEASE**

As the COVID-19 trial restrictions continue, Wodonga Real Estate Best Agents are committed to protecting the health and safety of everyone who inspects our properties and have put a number of precautions in place.

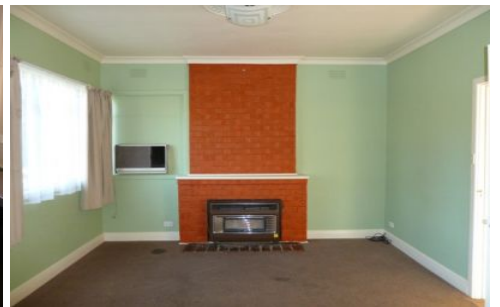
Please take note of the following:

- Number of people to enter the premises for inspection will depend on property size and state regulations.
- Our staff members will be wearing gloves and will administer you hand sanitizer upon entry.
- Staff members will open all doors for you and turn on all lights.
- Please refrain from touching any surfaces. If there's anything you wish to look at, please ask the staff representative.

If any of the following applies to you, please refrain from making an inspection appointment:

- Have you returned from overseas or Metropolitan Melbourne in the last 14 days?
- Do you currently have any cold or flu like symptoms?
- Have you been in contact with anyone suspected of carrying the COVID-19 Virus?

We are open for business and here to help.  
Please don't hesitate to contact us by phone, e-mail or via our website.  
We thank you for your understanding and co-operation.



**2/928 Padman Drive Albury NSW**

1 1

**ONLINE APPLICATIONS WILL BE REQUIRED PRIOR TO VIEWING TIMES BEING ARRANGED**

Large single-bedroom unit close to town, featuring gas heating and wall air conditioning, separate lounge and dining areas, electric cooking, large enclosed back yard and off street car parking.

**View :** <https://www.wodongarealestate.com.au/lease/nsw/murray-region/albury/residential/townhouse/5901228>



**Nicki Waldron**  
0260 561888