



**wodonga real estate bestagents**

**ATTENTION PLEASE**

As the COVID-19 virus restrictions continue, Wodonga Real Estate Best Agents are committed to protecting the health and safety of everyone who inspects our properties and have put a number of precautions in place.

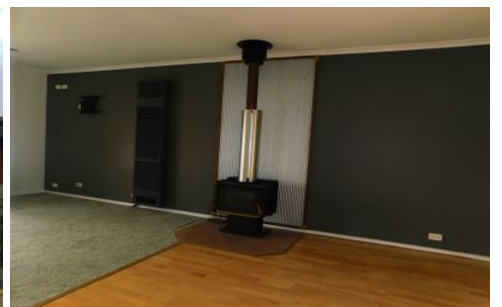
Please take note of the following:

- Number of people to enter the premises for inspection will depend on property size and state regulations.
- Our staff members will be wearing gloves, a face mask and will administer hand sanitiser upon entry. You are, (as required by law) to wear a face mask.
- NO FACE MASK, NO ENTRY**
- Staff members will open all doors for you and turn on all lights.
- Please refrain from touching any surfaces. If there's anything you wish to look at, please ask the staff representative.

If any of the following applies to you, please refrain from making an inspection appointment:

- Have you returned from overseas or Metropolitan Melbourne in the last 14 days?
- Do you currently have any cold or flu like symptoms?
- Have you been in contact with anyone suspected of carrying the COVID-19 Virus?

We are open for business and here to help.  
Please don't hesitate to contact us by phone, email or via our website.



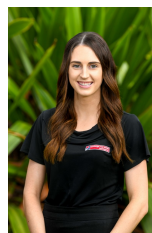
**10 Page Court Wodonga VIC**

3 2 2

**ONLINE APPLICATIONS WILL BE REQUIRED PRIOR TO VIEWING TIMES BEING ARRANGED**

Three bedroom family home located in the popular Federation Estate. Features master bedroom with en-suite and walk in robe, two other bedrooms with built in robes and renovated main bathroom. Spacious lounge room with wood fire, second living area with additional dining area, two gas heaters and ducted cooling throughout. Outside is a large undercover entertaining area, 6m x 6m powered shed with low maintenance gardens front and back with double car accommodation.

**View :** <https://www.wodongarealestate.com.au/lease/vic/north-eastern/wodonga/residential/house/5887107>



**Jessica Chalmers**  
0260 561 888