



**wodonga real estate  
bestagents**



**8 Porta Court Wodonga VIC**

4 2 2

Fantastic family home offers four double bedrooms, main with en-suite and walk in robe plus built in robe in all other bedrooms. Great kitchen with gas appliances, spacious tiled family area with separate lounge room, ducted heating and cooling throughout, full bathroom, great size laundry with space for fridge / freezer. Fantastic covered outdoor entertaining area with over sized double garage with internal, remote and rear access.

**View** : <https://www.wodongarealestate.com.au/lease/vic/north-eastern/wodonga/residential/house/5840543>

### General Notes

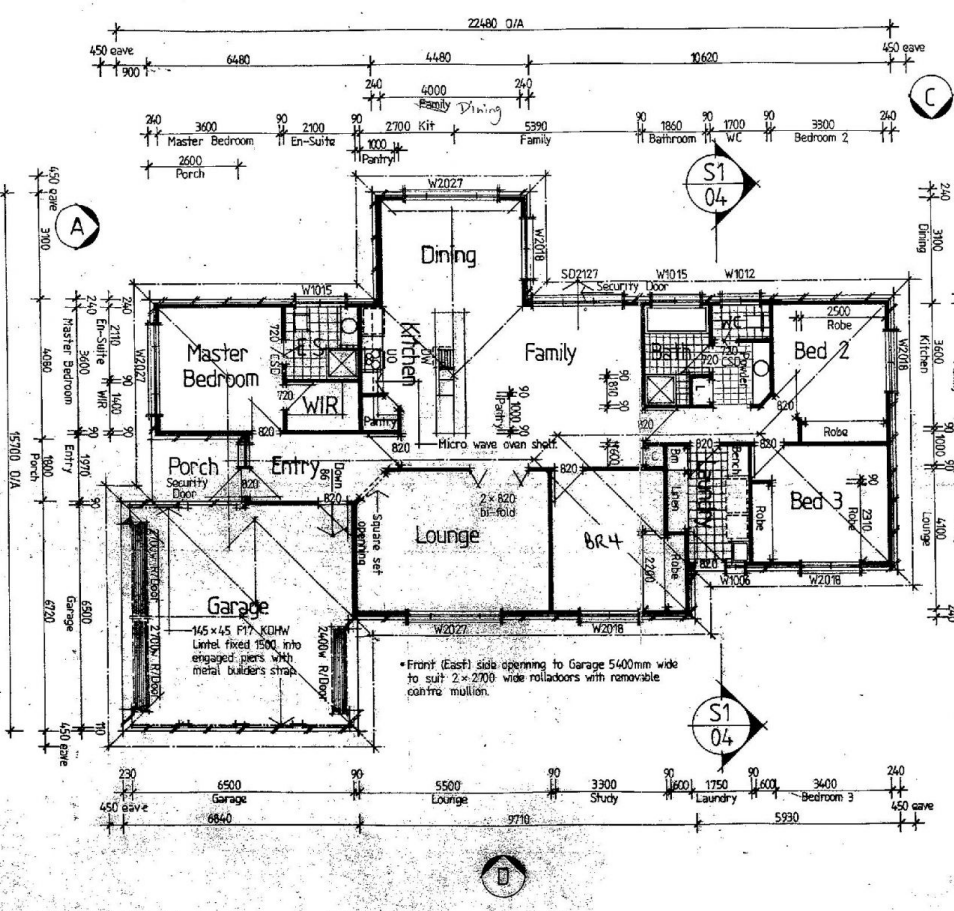
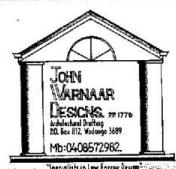
- Dimensions indicated are in millimetre's.
- Figured dimensions shall take precedence over scale.
- Install safety glass to doors and windows as required in accordance with AS1288.
- Install shaving cabinet behind En-Suite mirror in accordance with owners requirements.
- Fridge size 700 wide x 1700 high.
- Total area of Residence 182m<sup>2</sup>.
- Total area of Garage 45.7m<sup>2</sup>.
- Floor area of Porch 4.68m<sup>2</sup>.



Proposed Residence for

Lot 62 Porta Court,  
WODONGA, 3690.

Scale 1:100 Date 11 Nov 2000  
 Drawing N<sup>o</sup> 10461  
 Sheet N<sup>o</sup> 02  
 Drawn by John Varnaar



Details Floor Plan