



1/190 Lawrence Street Wodonga VIC

3 2 2

Designed with low maintenance in mind plus incorporating features sought after in the modern world this townhouse duly delivers.

Offering its own remote secure entry to double carport, two spacious living areas, functional kitchen with stainless steel appliances, separate study, three good size bedrooms-main with en-suite, centrally located gas heating, ducted evaporate cooling throughout, large alfresco entertaining area and a neat 355m² allotment.

For investors the home was recently let at \$330 per week. Located within short walking distance to everything in Wodonga the incredible riches for you to enjoy are at your fingertips.

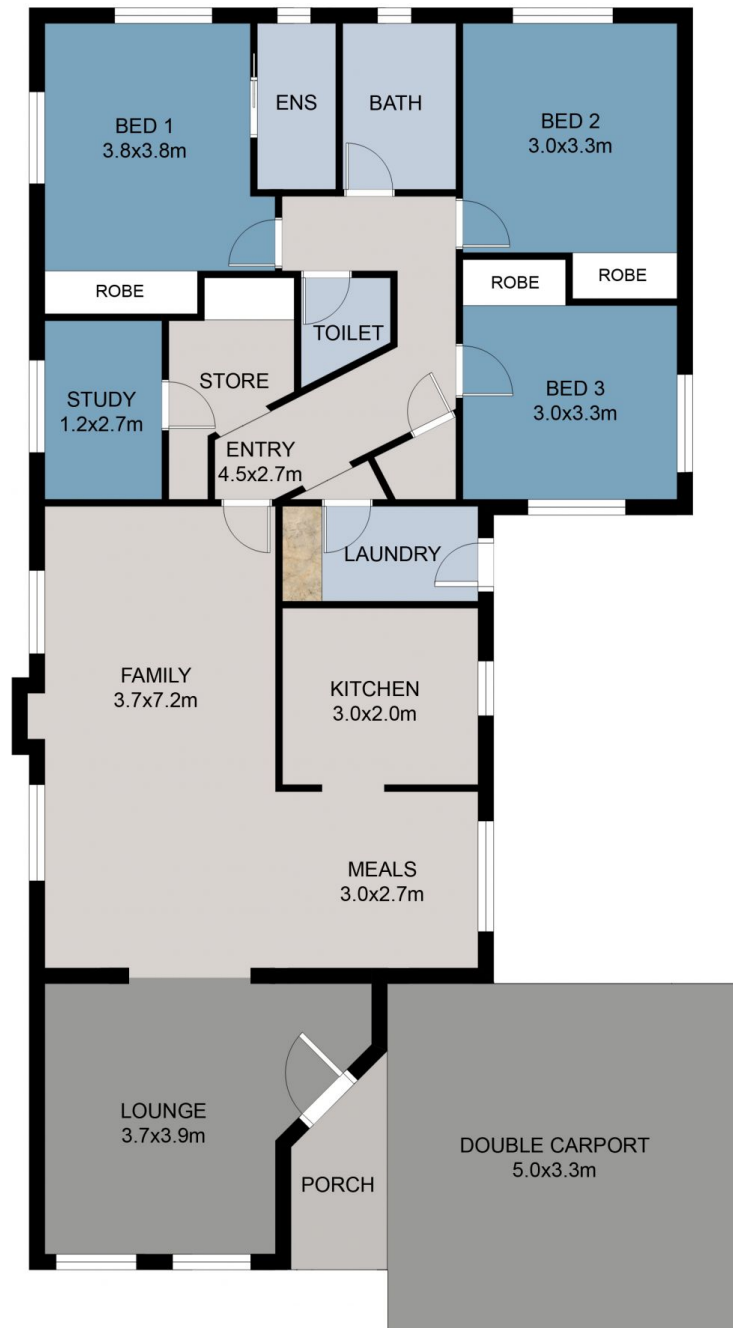
Note - 2/190 Lawrence Street a vacant 296m² allotment is for sale at \$145,000.

Price : \$ 300,000
Land Size : 355 sqm
View : <https://www.wodongarealestate.com.au/sale/vic/north-eastern/wodonga/residential/unit/5837862>



Clinton Harvey
0260 561 888

GARDEN SHED
3.3x2.3m



FLOOR PLAN

This floor plan including furniture, fixture measurements and dimensions are approximate and for illustrative purposes only. Boxbrownie.com gives no guarantee, warranty or representation as to the accuracy and layout. All enquiries must be directed to the agent, vendor or party representing this floor plan.

1/190 Lawrence Street, Wodonga