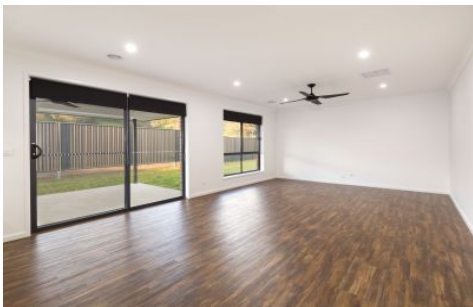




wodonga real estate
bestagents



4 Fivefields Road Leneva VIC

4 2 2

Situated in 'Kinchington Estate' this 12-month old brick home was built by Southernvale Homes. There are many upgraded features throughout including downlights, eves, ceiling fans, footpaths right around and fantastic landscaping. The views of surrounding hills are absolutely amazing from every angle of the home.

Price : \$ 430,000
Land Size : 612 sqm
View : <https://www.wodongarealestate.com.au/sale/vic/north-eastern/leneva/residential/house/5837820>

- * Four large bedrooms with built in robes and matt black ceiling fans, master with ensuite and walk in robe
- * North facing open plan living and spacious lounge room
- * Modern kitchen with gas cooking, walk in pantry, 900mm stainless steel oven, dishwasher and ample cupboard and bench space
- * Full bathroom with bath
- * Ducted heating and cooling for year-round comfort
- * Fantastic north east facing alfresco with great views
- * 612m² landscaped allotment with side access



Tom Sanderson
0260 561 888