

4 Diosma Court Wodonga VIC

4 2 3

Situated in in popular Parkland Estate on approx. 656m², this neat and tidy four bedroom brick home has everything you could dream of.

Set in a quiet court location this home consists of built in robes in all four bedrooms, master with amazing renovated ensuite.

The open plan L shaped lounge and formal dining has new flooring and a timber feature wall.

Modern kitchen and renovated bathroom to service the home.

Double lock up garage with a workshop and additional single carport.

Short stroll to Birallee shopping centre, schools, leisure centre, parks, bike paths and children's play areas.

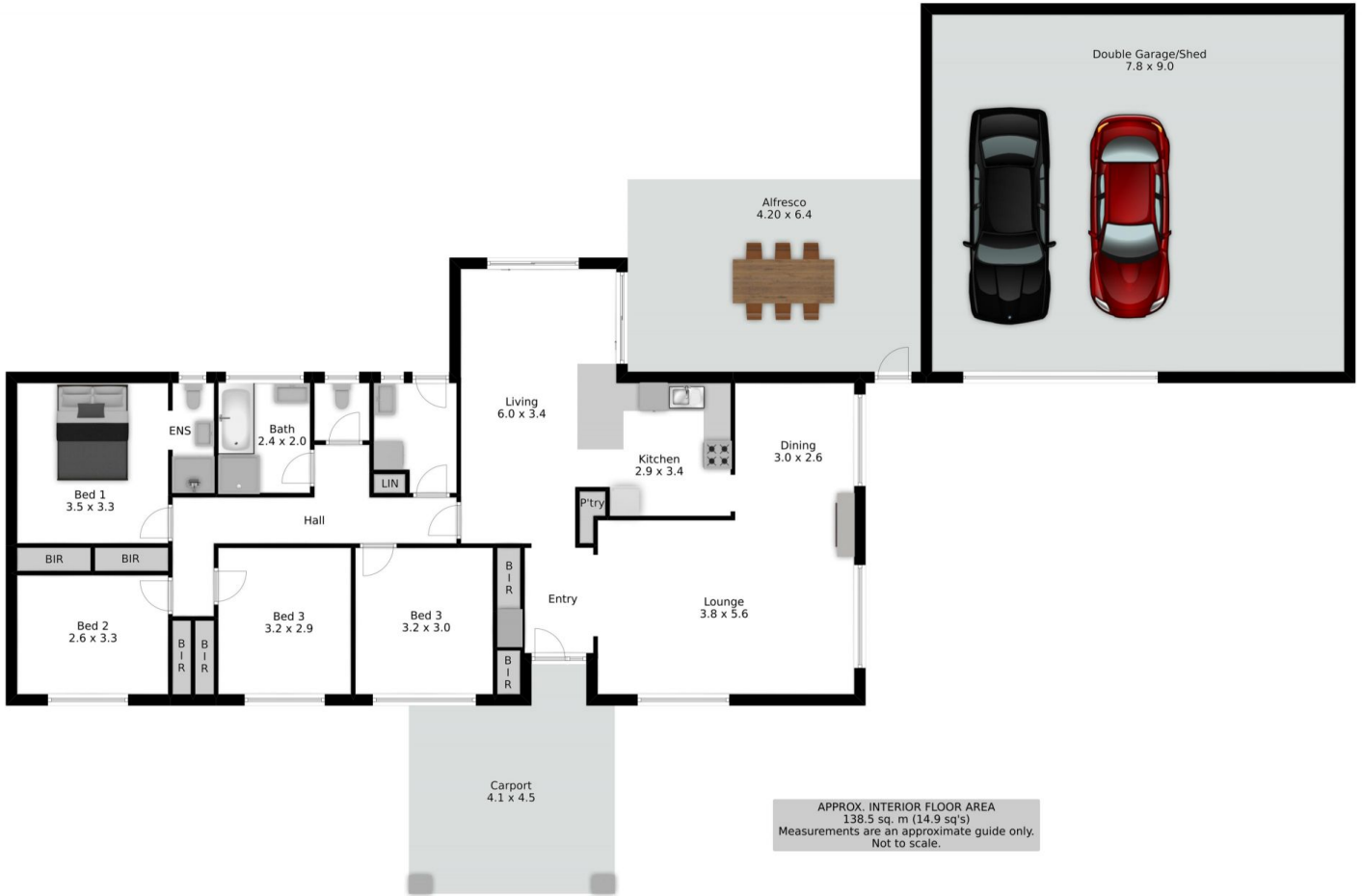
Price : \$ 335,000
Land Size : 656 sqm
View : <https://www.wodongarealestate.com.au/sale/vic/north-eastern/wodonga/residential/house/5837806>



Margy Meehan
0260 561 888



Vanessa Meehan
0260 561 888



APPROX. INTERIOR FLOOR AREA
 138.5 sq. m (14.9 sq's)
 Measurements are an approximate guide only.
 Not to scale.