



wodonga real estate
bestagents



22 Primrose Way Wodonga VIC

4 2 1

Situated close to schools, shops and public transport, this property has a lot to offer.

Features include; an ensuite to the main bedroom, large separate lounge, alternate living space/rumpus, plus central kitchen and dining space.

This property provides ample living space with ducted evaporative air conditioning and gas wall furnace.

Complimented by undercover outdoor space or alternate car space and off-street parking.

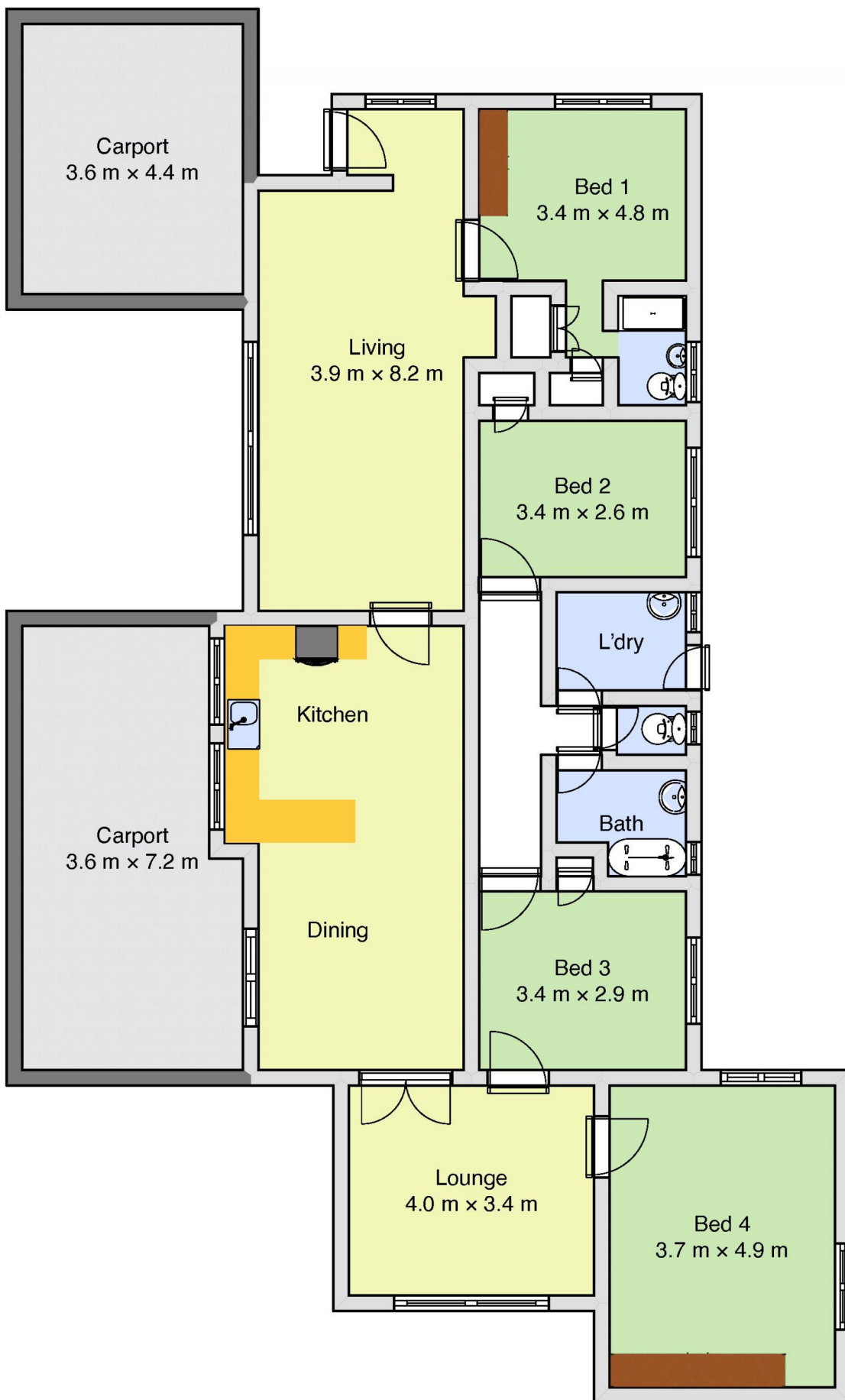
You need to see for yourself, this property is worth the time to inspect.

Currently leased for \$325 per week or can be purchased with vacant possession.

Price : \$ 300,000

Land Size : 573 sqm

View : <https://www.wodongarealestate.com.au/sale/vic/north-eastern/wodonga/residential/house/5837788>



22 Primrose Way, Wodonga