



**36 Azure Drive Wodonga VIC**

3 2 1

This neat as a pin property features three bedrooms with built in robes, master with ensuite and walk in robe, two living zones, ducted heat and cool, excellent kitchen with gas cooking and dishwasher, single lock up carport, large undercover entertaining and a compact low maintenance, secure and private yard.

Located in a popular estate and just a few minutes drive to schools, shops, cafes, doctors and sporting fields, there's nothing to do.

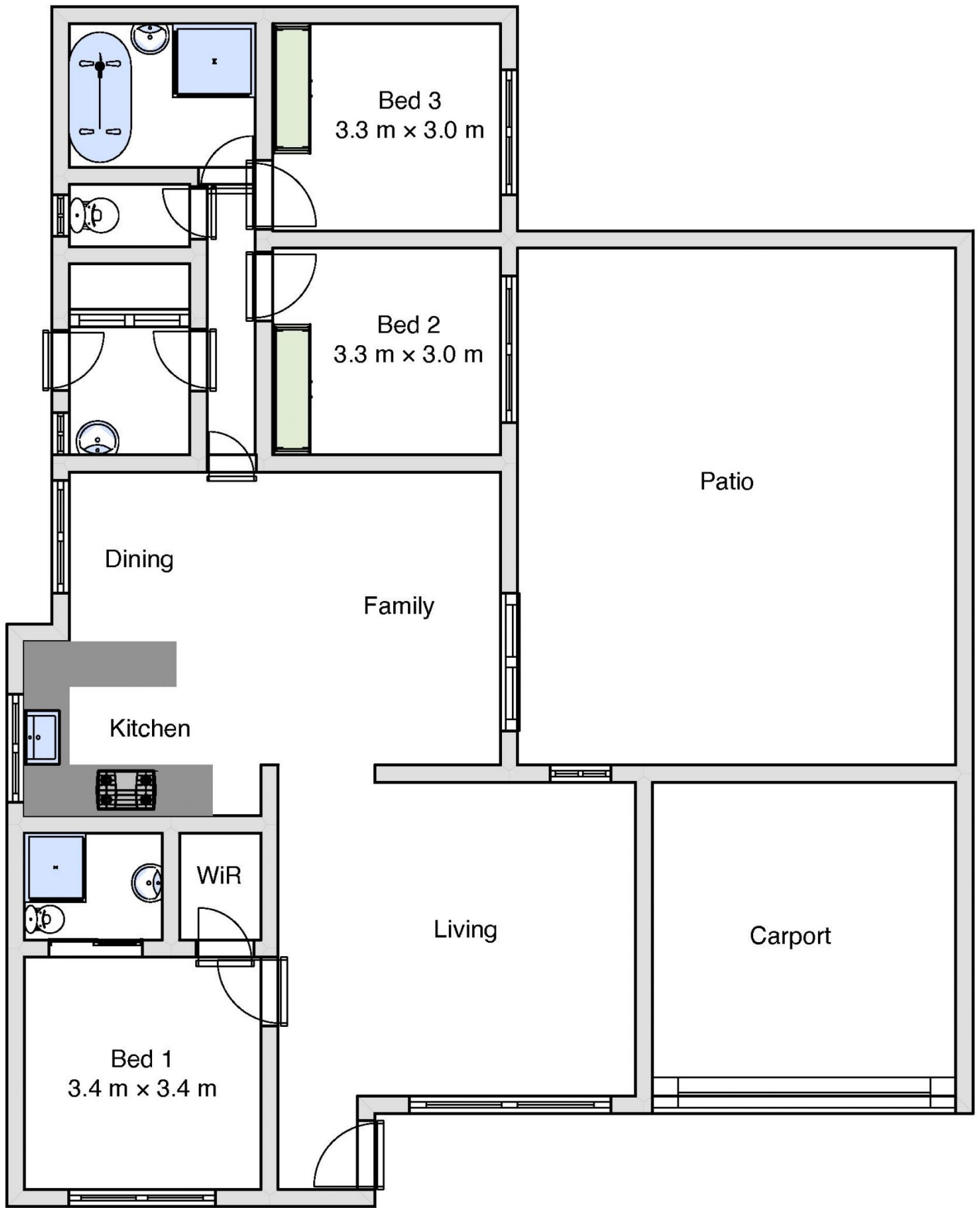
This is the one you've been waiting for.

For investors - expected rental return of \$320 - \$350 per week.

**Price** : \$ 309,000  
**Land Size** : 463 sqm  
**View** : <https://www.wodongarealestate.com.au/sale/vic/north-eastern/wodonga/residential/house/5837743>



**Mark Rosevear**  
**0260 561 888**



36 Azure Drive, Wodonga