



**9 Templeton Place Wodonga VIC**

3 1 2

Sparkling with brand new paint and carpet throughout this low maintenance home is affordable for all levels of the market.

Neatly presented the home is ready for your occupation, the many features include-

Laminate kitchen with new electric hot plate and rangehood

Light filled spacious lounge

Main bedroom with semi en-suite/two way bathroom

Comforts of gas wall furnace heating and ducted evaporative cooling

Covered all weather outdoor entertaining area

Side access for trailer etc

Secure easy care 529m<sup>2</sup> allotment

For investors expected rental return of \$295.00 - \$315.00

Handy location close to schools, shops, transport, leisure centre and more.

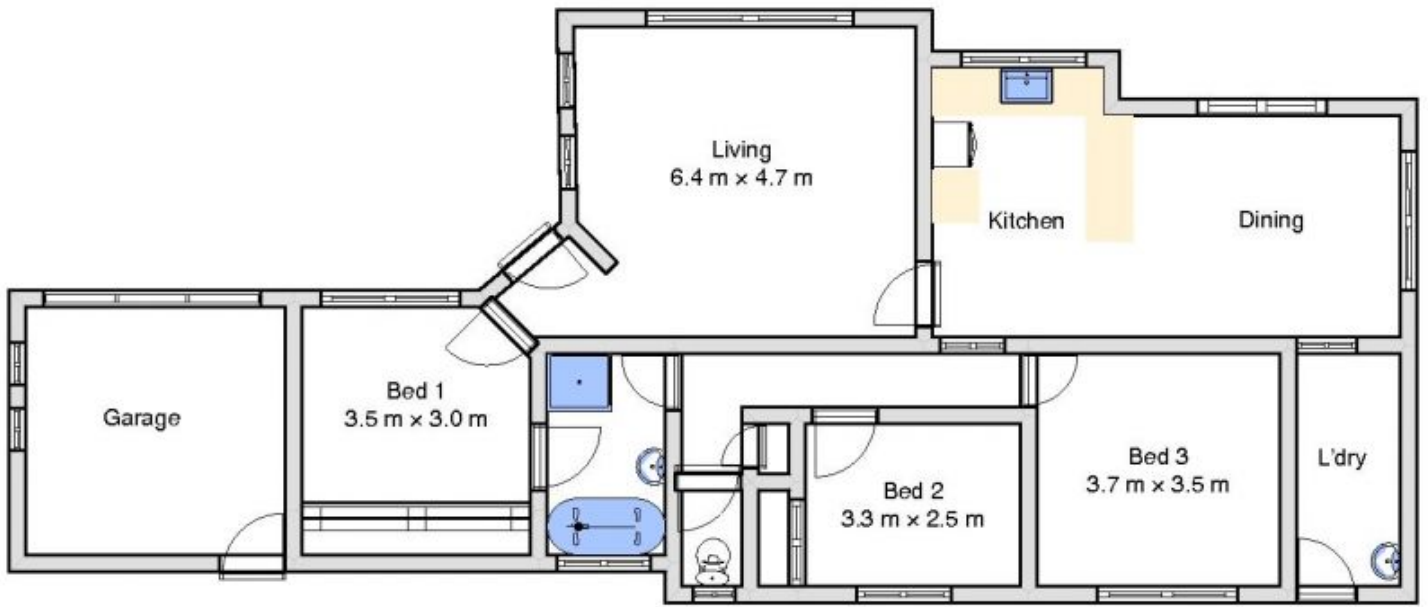
**Price** : \$ 270,000

**Land Size** : 529 sqm

**View** : <https://www.wodongarealestate.com.au/sale/vic/north-eastern/wodonga/residential/house/5837614>



**Clinton Harvey**  
**0260 561 888**



9 Templeton Place, Wodonga