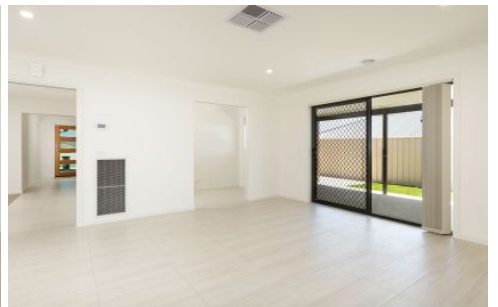




wodonga real estate
bestagents



5 Grieve Way Wodonga VIC

3 2 2

Built to an absolute quality finish, this brand new home comprising 16.88 squares of living will impress with every step inside and out. The many top level premium features include -

Two spacious living areas of formal lounge and separate tiled family room, study nook.

Gleaming kitchen with 900mm hot plate and oven, and dishwasher

Master bedroom with double vanity to en-suite, walk in robe

Superb large alfresco area for every occasion

Comforts of gas ducted heating and evaporative cooling

Double garage with remote with internal access

1.9 metre side/rear yard access for trailers/boats etc

Private and secure 622m² allotment

For Investors expected rental return \$350 - \$370 per week

Fully complete Turn Key finish including all window furnishings plus turf to front and rear yards, clothesline,

Price : \$ 408,000

Land Size : 622 sqm

View : <https://www.wodongarealestate.com.au/sale/vic/north-eastern/wodonga/residential/house/5837573>



Clinton Harvey
0260 561 888



FLOOR PLAN

This floor plan including furniture, fixture measurements and dimensions are approximate and for illustrative purposes only. Boxbrownie.com gives no guarantee, warranty or representation as to the accuracy and layout. All inquiries must be directed to the agent, vendor or party representing this floor plan.

5 Grieve Way, Wodonga