



**10 Beresford Court Wodonga VIC**

5 2 1

A genuine and spacious five bedroom home that is a true family pleaser. Features all of today's modern conveniences including-

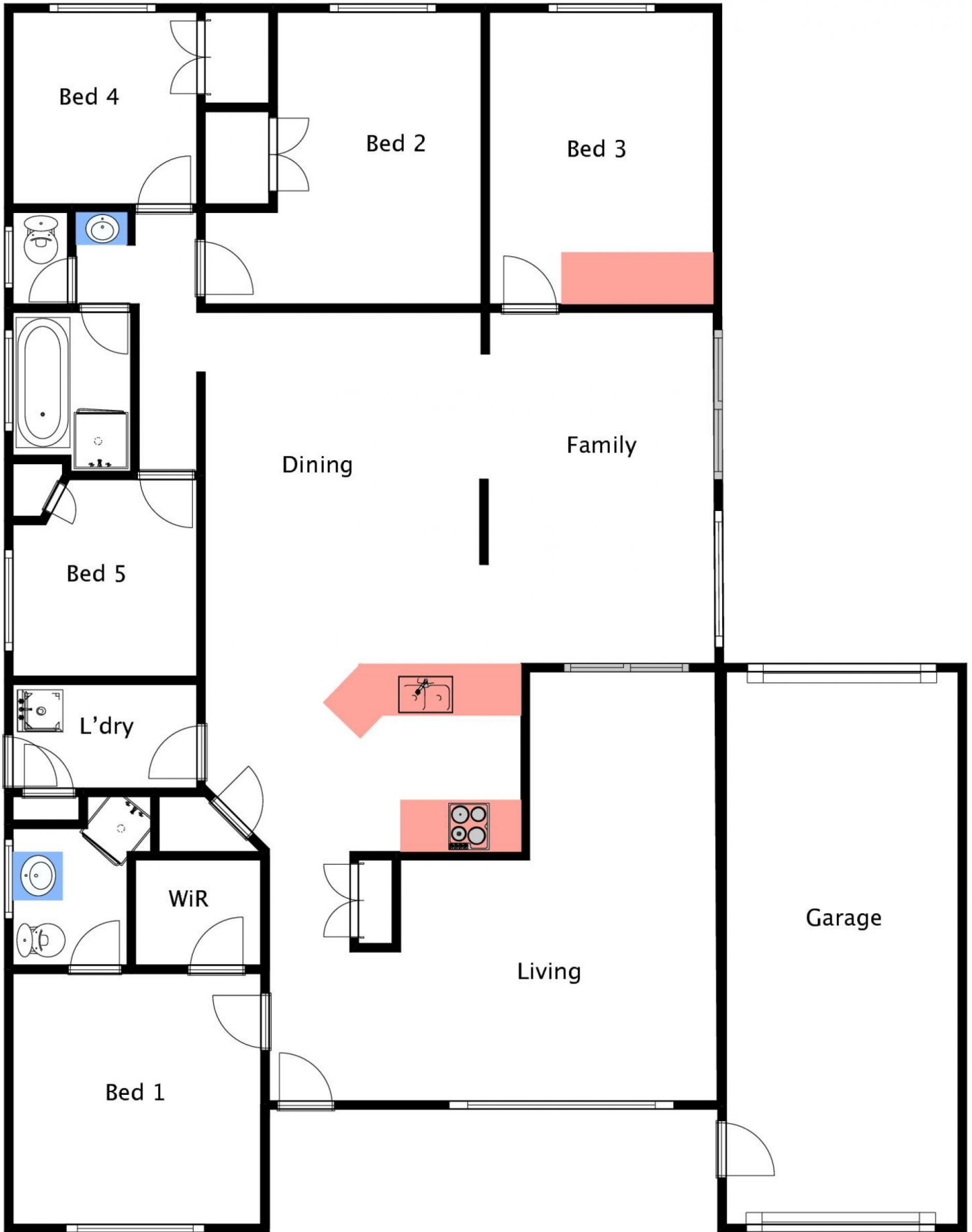
Generous size separate lounge/dining and family rooms  
Master bedroom with en-suite and walk in robe  
Comforts of ducted heating and cooling, additional split system

Rear access through the oversize lock up garage  
Huge alfresco entertaining area  
Private & secure 713m<sup>2</sup> allotment  
Quiet court location close to the Wodonga golf course, university/tafe and more

**Price** : \$ 355,000  
**Land Size** : 713 sqm  
**View** : <https://www.wodongarealestate.com.au/sale/vic/north-eastern/wodonga/residential/house/5837544>



**Clinton Harvey**  
0260 561 888



10 Beresford Court, Wodonga