



2 Memorial Drive Wodonga VIC

3 2 2

Rise with enthusiasm each morning and capture a glorious country outlook through the bay window of the main bedroom, far removed from the limitations of suburbia.

When leisure time permits hook up the caravan (or other vehicles) with the designed port and truly get away from it all. The many premium features include-

Generous size electric kitchen with two dishwashers
Two living zones of separate formal lounge and family room

Comforts of gas ducted heating and evaporative cooling

Double garage with remote and internal access

Quality built by Graham James in 1999

Private and secure 1004m² allotment

Extras of 1.5KW solar, automatic sprinklers to gardens

Dress circle address surrounded by superb homes

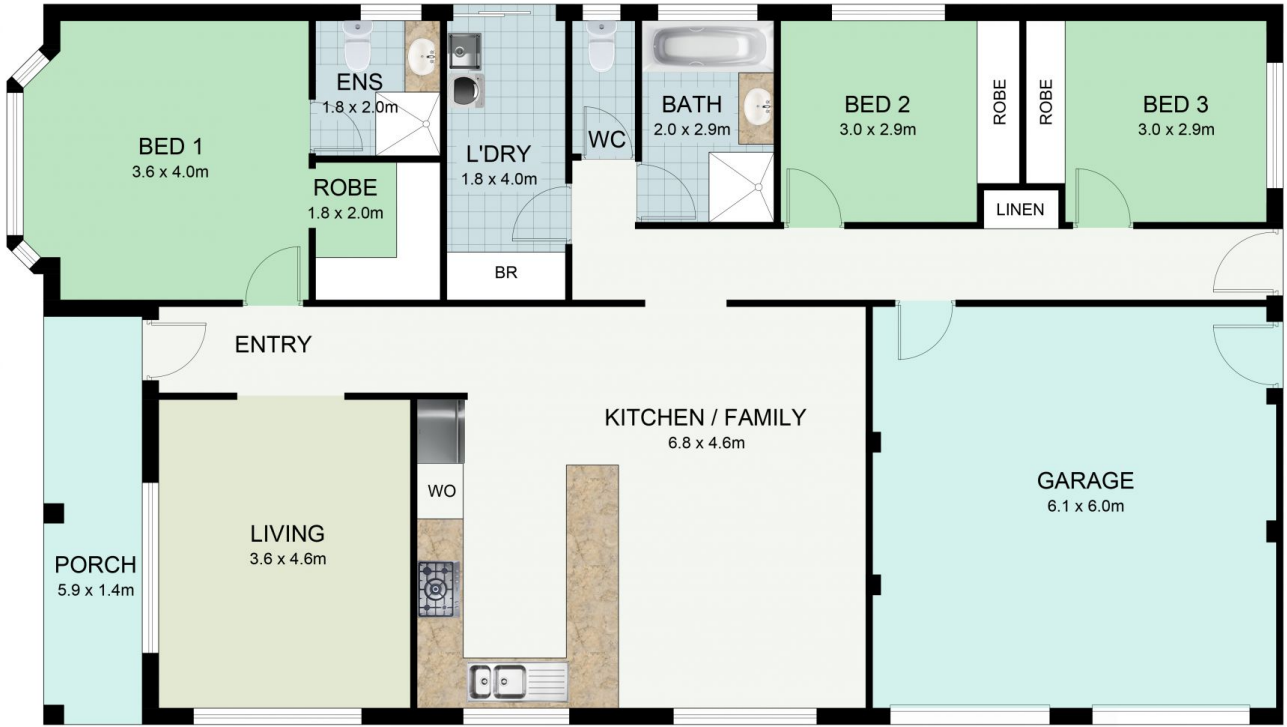
Price : \$ 350,000

Land Size : 1004 sqm

View : <https://www.wodongarealestate.com.au/sale/vic/north-eastern/wodonga/residential/house/5837543>



Clinton Harvey
0260 561 888



Floor plan, furniture, and fixture measurements and dimensions are approximate and are for illustrative purposes only. Boxbrownie.com gives no guarantee, warranty or representation as to the accuracy and completeness of the floor plan.

2 Memorial Drive, Wodonga