



13 Hallawell Crescent Wodonga VIC

5 2 2

Situated in the desirable Willow Rise Estate, this family home encapsulates all that is desirable in family living. Within close proximity to walking tracks, local parks, shops, sporting fields, schools & public transport.

Enhancing the family appeal this home offers a smart floor plan with spacious formal and informal spaces. The generous master bedroom with updated ensuite is located upstairs, with the main lounge room complete with cosy canara wood heater.

Additional is the separate second living area, updated kitchen and dining. The central kitchen features a 900m gas cooker, island bench and plenty of cupboard space.

Located downstairs is four bedrooms all with built in robes, updated main bathroom, plus a large space which could be utilized as a rumpus, workshop or mancave.

Complemented with an abundant amount of under house storage.

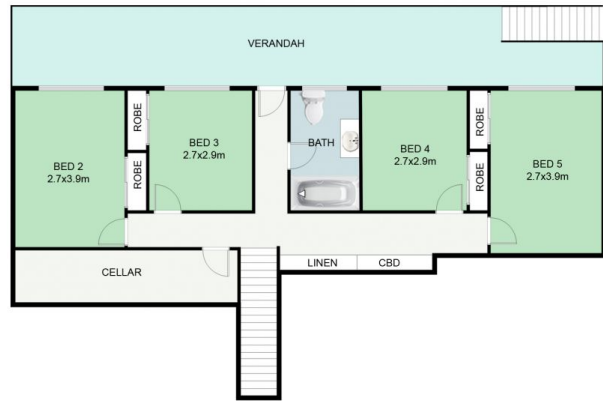
Price : \$ 375,000

Land Size : 873 sqm

View : <https://www.wodongarealestate.com.au/sale/vic/north-eastern/wodonga/residential/house/5837537>



UPPER FLOOR



LOWER FLOOR

LOWER FLOOR : 69.48 m²
 UPPER FLOOR : 140.60 m²

This floor plan including furniture, fixture measurements and dimensions are approximate and for illustrative purposes only. Boxbrownie.com gives no guarantee, warranty or representation as to the accuracy and layout. All enquiries must be directed to the agent, vendor or party representing this floor plan.

13 Hallawell Crescent, Wodonga