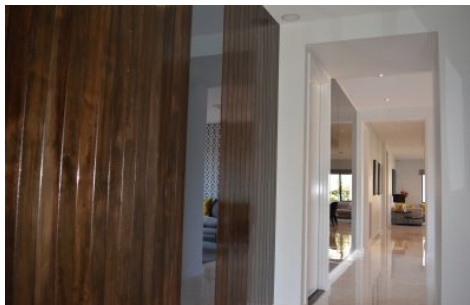




wodonga real estate
bestagents



53 Maygar Avenue Wodonga VIC

4 2 2

" All Offers Considered"

This Award winning ex-display home is new to the market ready for you to purchase, set in amongst a high calibre of premium housing.

Fitted with premium quality fittings and appliances this is a must to come and see. Within walking distance to the ever expanding shopping precinct of White Box Rise, medical facilities, outdoor swimming pool, childcare centre, walking tracks and parks, the focus is on convenience and a healthy lifestyle.

A North facing entry with Western Red Cedar feature wall and mirror panels, gives an instant feeling of luxury as you step through the front door.

Four Spacious double bedrooms, the master offering a generous walk-in robe and an en-suite with quality chrome tapware, double vanity and natural wood finish cabinetry.

Natural sunlight filled formal lounge, with gorgeous wooden

Price : \$ 499,000

Land Size : 572 sqm

View : <https://www.wodongarealestate.com.au/sale/vic/north-eastern/wodonga/residential/house/5837520>



Silviya Saric
0260 561 888

<https://www.wodongarealestate.com.au>

MIN LOT
WIDTH*

12.5M

WATERFORD 232 SAVANNAH

4 2 2

Total area	250.08m²	26.92sq
Living	176.07m ²	18.95sq
Portico	9.25m ²	1.00sq
Alfresco	27.97m ²	3.01sq
Garage	36.8m ²	3.96sq
House width	14.87m	
House length	23.99m	
Min lot width*	12.5m	
Facade options	6	

House size and floorplan are specific to home on display.

Available in:

Waterford 232 (23.37sq)

As displayed floorplan options



Notes: This display home has a 'flipped' front section (Master Bedroom and Garage). This differs from the standard Waterford 232 floor plan, please speak to a Sales Consultant for more information.

Floorplan shown is for home on display only. Floorplans may differ depending on facade chosen and may not reflect developer guidelines, planning or other requirements. *Please speak to a Sales Consultant for full details of site and lot size requirements before making your home or land selection. Please speak to your Sales Consultant for full details of site and lot size requirements before making your home or land selection. 2016 © Dorens Family Homes Pty Ltd. ARN 83 156 754 748.