



7 Dalgleish Street Wodonga VIC

3 1 1

Across from the lush green fields of sporting precinct Kelly Park is this neat and affordable opportunity for buyers of all walks of life.

A top central location so close to schools, shops, transport and more the other extras include-

Large light filled lounge and electric kitchen

Updated bathroom with shower only

Comforts of gas heating, ducted cooling and ceiling fans throughout

Single lock up garage with side access to backyard

For investors expected rental return of \$260 - \$270 per week

Enormous potential to enhance or just live very comfortably

See attached statement of information - Price Guide - \$205,000 to \$225,000

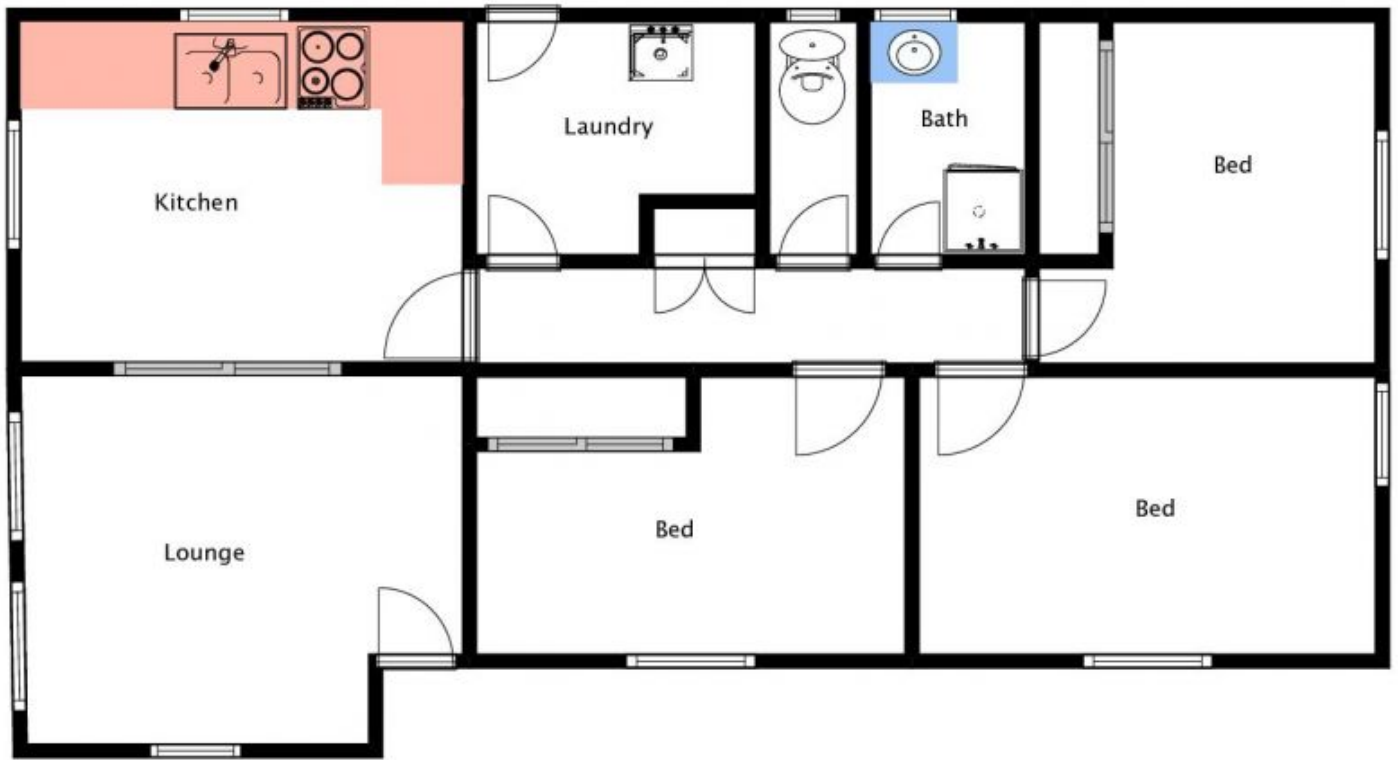
Price : \$ 205,000

Land Size : 626 sqm

View : <https://www.wodongarealestate.com.au/sale/vic/north-eastern/wodonga/residential/house/5837481>



Clinton Harvey
0260 561 888



7 Dalgleish St, Wodonga