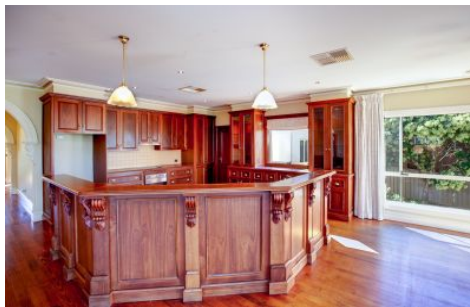
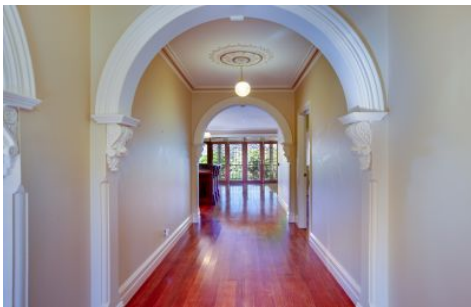




wodonga real estate
bestagents



20 Jevington Drive Wodonga VIC

5 2 2

This master built Edwardian home showcases amazing features. Style and grace beyond most, this exceptional home offers spectacular views across Wodonga and valleys to the East. Superbly positioned in the rolling hills of Camborne Park Estate on a 982m² allotment.

Stepping through the grand entrance of this impressive home you are greeted by polished flooring and decorative arches. To the left is a spacious formal living area with decorative cornicing, ceiling roses, quality drapes and an open fire place for the relaxing night in.

Master suite offering walk in robe and ensuite, additional powder room upstairs. Light filled open plan living with opening doors to semi enclosed alfresco with inspiring views. Downstairs you will find four bedrooms three with built in robes, full bathroom with claw foot bath, dazzling

Price : \$ 550,000
Land Size : 982 sqm
View : <https://www.wodongarealestate.com.au/sale/vic/north-eastern/wodonga/residential/house/5837430>

<https://www.wodongarealestate.com.au>



UPPER STOREY FLOOR PLAN



LOWER STOREY FLOOR PLAN

UPRN: 3101062

