



**wodonga real estate
bestagents**



**wodonga real estate
bestagents**

ATTENTION PLEASE:

As the COVID-19 virus restrictions continue, Wodonga Real Estate Best Agents are committed to protecting the health and safety of everyone who inspects our properties and have put a number of precautions in place.

Please take note of the following:

- * Only one person can enter the premises to inspect along with a Wodonga Real Estate representative
- * Our staff members will be wearing gloves and will administer you hand sanitizer upon entry
- * Staff members will open all doors for you and turn on all lights. Please refrain from touching any surfaces. If there's anything you wish to look at, please ask the staff representative.

If any of the following applies to you, please refrain from making an inspection appointment:

- * Have you returned from overseas in the last 14 days?
- * Do you currently have any cold or flu like symptoms?
- * Have you been in contact with anyone suspected of carrying the COVID-19 Virus?

While our office is closed to the public, we are still here to help. Please don't hesitate to contact us by phone, e-mail or via our website. We thank you for your understanding and co-operation.



2 Sonia Court Wodonga VIC

3 1 2

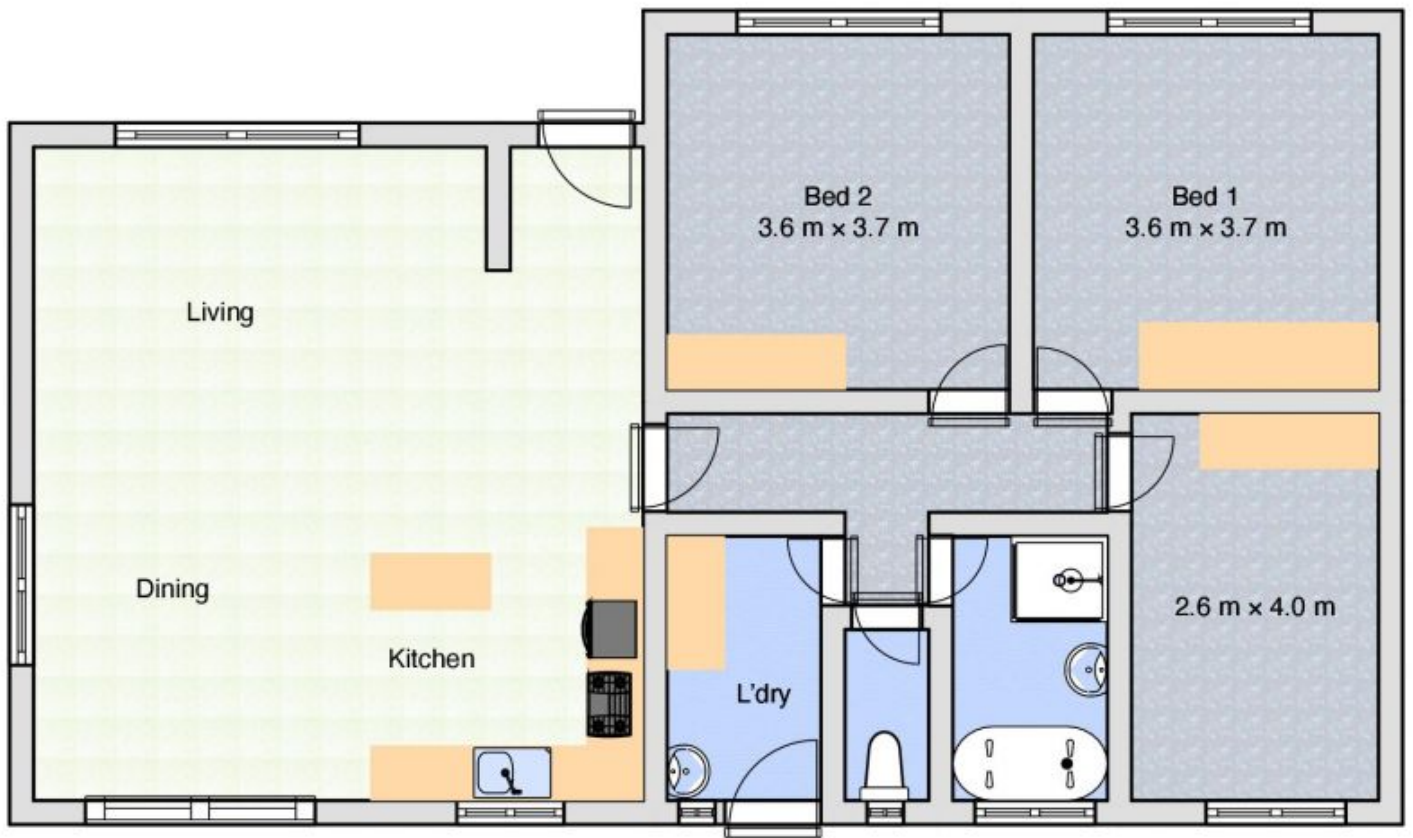
This well presented home has it all for the first home buyer, investor or purchasers looking for low maintenance to downsize.

The many features include a two year old 'Flair' kitchen with all the modern appliances, floating floors to the light filled lounge, three bedrooms all with built in robes and ceiling fans, comforts of evaporative cooling and a gas wall furnace, carport and a 7 x 4.85 metre shed, inviting pergola to relax and entertain, secure and private 580m² allotment. For investors expected rental return of \$310 - \$330 per week and a superb location close to the Wodonga Golf Course, University & TAFE plus more.

Price : \$ 285,000
Land Size : 580 sqm
View : <https://www.wodongarealestate.com.au/sale/vic/north-eastern/wodonga/residential/house/5834933>



Clinton Harvey
0260 561 888



2 Sonia Ct, Wodonga